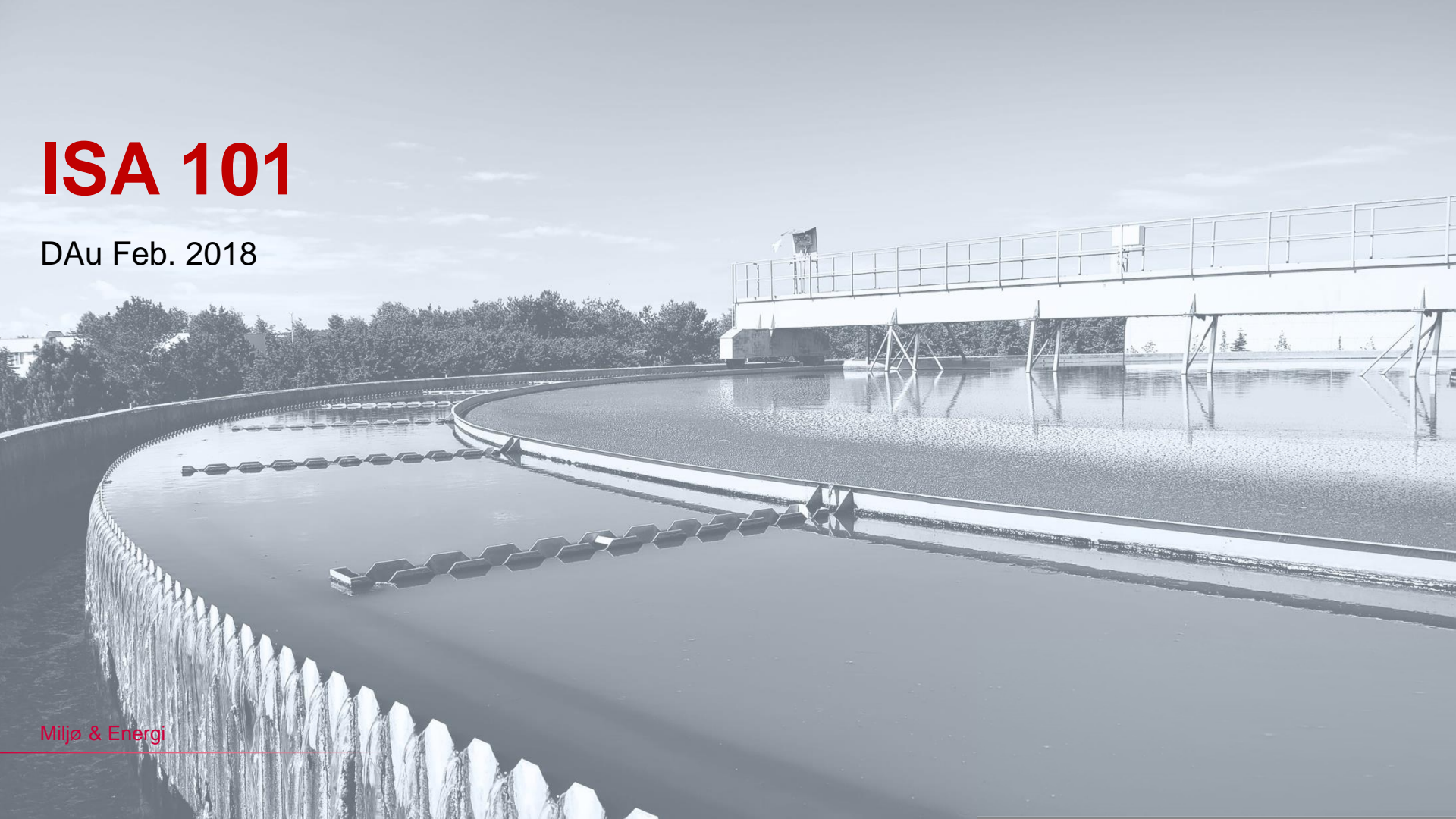


ISA 101

DAu Feb. 2018



4 grundsten

TEORI

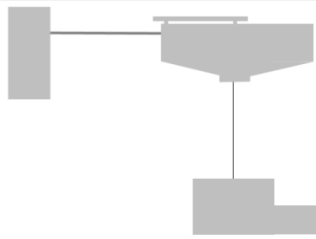
Setting the Standard for Automation™



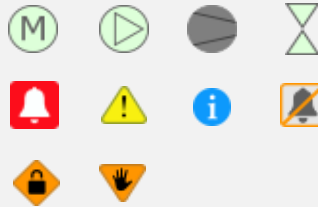
ISA101, Human Machine Interfaces

Applying ISA101 Concepts to Existing HMI Applications

1) Grafik

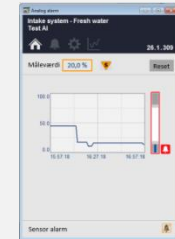


2) Komponenter

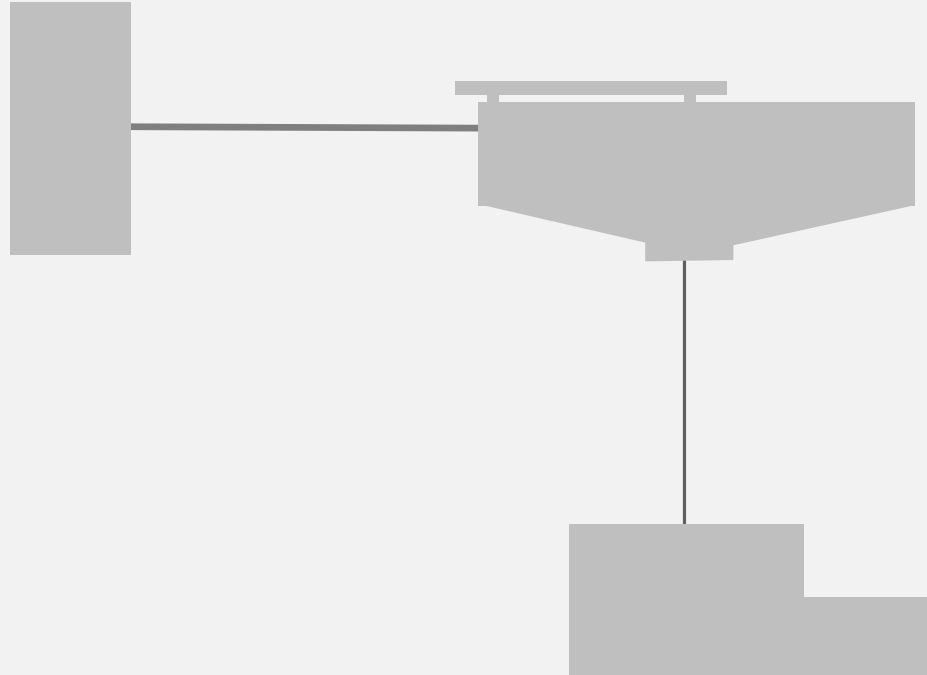


3) Framework

4) Popup



Hvordan tegnes der



Niveau 1

Anlæg

Overblik / dashboard

Niveau 2

Afsnit

Daglig drift

Niveau 3

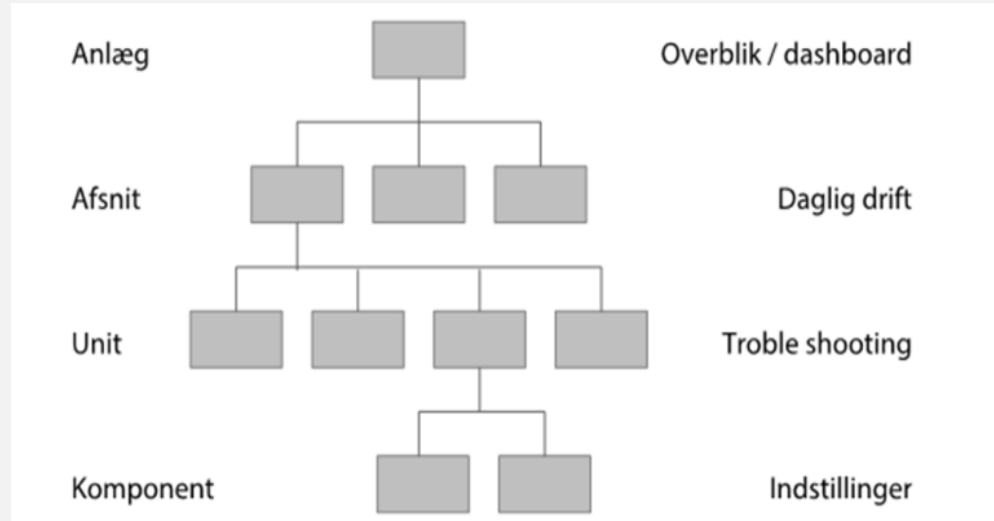
Unit

Trobleshooting

Niveau 4

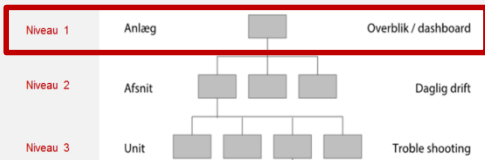
Komponent

Indstillinger



Eksempel

Niveau 1, overblik for en hel forsyningsdel



Høje Taastrup Fjernvarme
Oversigt
Oversigt
24-05-2017 16:01:37

Hedehusene >

Driftsbyen >

City 2 >

Kølling >

Mølleholmen >

Mobil måler >

Kragehave >

Lindebo >

Produktion, summeret

■ Egen-produktion ■ Vekslere Totalt 79,4 MW

Egen-produktion

MAC	0,0
HHC	0,0
MØC	0,0
CMC	0,6
SFC	0,2
TAC	0,0
GAC	0,0
HVC	25,1

Vekslere

CIV	20,9
LBV	15,4
MØC	6,8
HHV	6,3
KHV	4,1

Spædevand

	I dag	I dag / i går
CIV	2,03 m3	[-50% 0 +50%]
LBV	2,40 m3	[0]
MØC	0,50 m3	[0]
HHV	3,65 m3	[0]
KHV	0,55 m3	[0]

Pumper

	SP	SP / PV	PV fra
CIV-N	5,8 mVS	[-10% 0 +10%]	SCM
CIV-S	6,1 mVS	[0]	NBS
LBV	5,0 mVS	[0]	KTM
MØC	6,5 mVS	[0]	BLM
HHV-N	5,2 mVS	[0]	FSM
HHV-S	5,6 mVS	[0]	VKM
KHV	4,9 mVS	[0]	GYM

■ Max 24 timer ■ Aktuel

Veksler

	SP	SP / PV
CIV	81,6 °C	[-10% 0 +10%]
LBV	74,3 °C	[0]
MØC	72,2 °C	[0]
HHV-N	72,9 °C	[0]
HHV-S	67,7 °C	[0]
KHV	75,8 °C	[0]

■ Max 24 timer ■ Aktuel

Temperatur og tryk

CIV	81,6 °C	5,3 mVS	LBV	74,3 °C	13,2 mVS	MØC	72,2 °C	6,9 mVS	HHV	72,9 °C	5,2 mVS
SCM	82,3 °C	5,8 mVS	KTM	71,5 °C	5,0 mVS	IHM	72,5 °C	8,1 mVS	FSM	73,3 °C	5,2 mVS
NBS	81,4 °C	6,1 mVS	RVM	59,7 °C	14,1 mVS	SHM	71,5 °C	8,0 mVS	DSV	59,3 °C	4,8 mVS

Alarmer	46	23-05-2017 07:16:01 MAC-AL-OT02-SVIND	Malervej olietank 2 Svind	OK LOW
Critical	0	24-05-2017 07:56:10 LBV-DI-PLC2_KOMM-ALARM	Lindebo2 Kommunikationsfej til PLC	OK LOW
Medium	0			
Info	0			

Totalt Alarms: 6 Filter: Area in "LBV" Sort: Act/Priority, Descending

For fremsendelse af yderligere materiale
kontakt Peder Steffensen på
pls@picca.dk